

SAT Scores

	Greenwood School District	Newport School District	Susquenita School District	West Perry School District	State Average
2001					
Number Tested	48	34	65	86	75,487
Verbal Average	518	512	479	509	471
Math Average	526	525	489	506	470
2002					
Number Tested	29	38	82	72	75,596
Verbal Average	513	494	495	498	472
Math Average	516	525	500	504	475
2003					
Number Tested	40	41	91	98	78,825
Verbal Average	518	542	521	507	473
Math Average	520	530	513	510	475
2004					
Number Tested	24	29	75	90	79,565
Verbal Average	528	492	505	502	468
Math Average	511	488	517	489	470
2005					
Number Tested	33	46	61	89	81,660
Verbal Average	508	503	508	495	459
Math Average	483	511	509	500	462
2006					
Number Tested	31	51	67	93	82,287
Verbal Average	533	475	503	506	451
Math Average	541	485	523	513	457
Writing Average	527	480	491	503	437
Total	1,601	1,440	1,517	1,522	
Percentile	61	36	48	48	
2007					
Number Tested	37	34	76	109	88,268
Verbal Average	514	476	492	524	454
Math Average	536	482	496	512	460
Writing Average	489	469	478	506	441
2008					
Number Tested	27	39	74	80	85,173
Verbal Average	490	462	506	489	471
Math Average	490	496	508	514	478
Writing Average	471	466	492	480	457
2009					
Number Tested	24	42	81	72	80,719
Verbal Average	500	491	507	498	443
Math Average	498	510	510	509	451
Writing Average	503	477	492	487	431

SAT Scores Continued

	Greenwood School District		Newport School District		Susquenita School District		West Perry School District		State Average
	Score	%	Score	%	Score	%	Score	%	
2010									
Number Tested	34		22		71		82		79,613
Verbal Average	501		462		512		507		445
Math Average	501		457		523		510		454
Writing Average	495		466		494		473		432
2011									
Number Tested	44		28		63		103		85,869
Verbal Average	515	56	460	37	525	59	498	47	452
Math Average	535	56	476	37	520	52	502	47	459
Writing Average	505	56	442	34	504	55	487	49	430
Total	1,555		1,378		1,549		1,487		
Percentile	56		36		55		48		

Per Wikipedia

2006 Average Scores

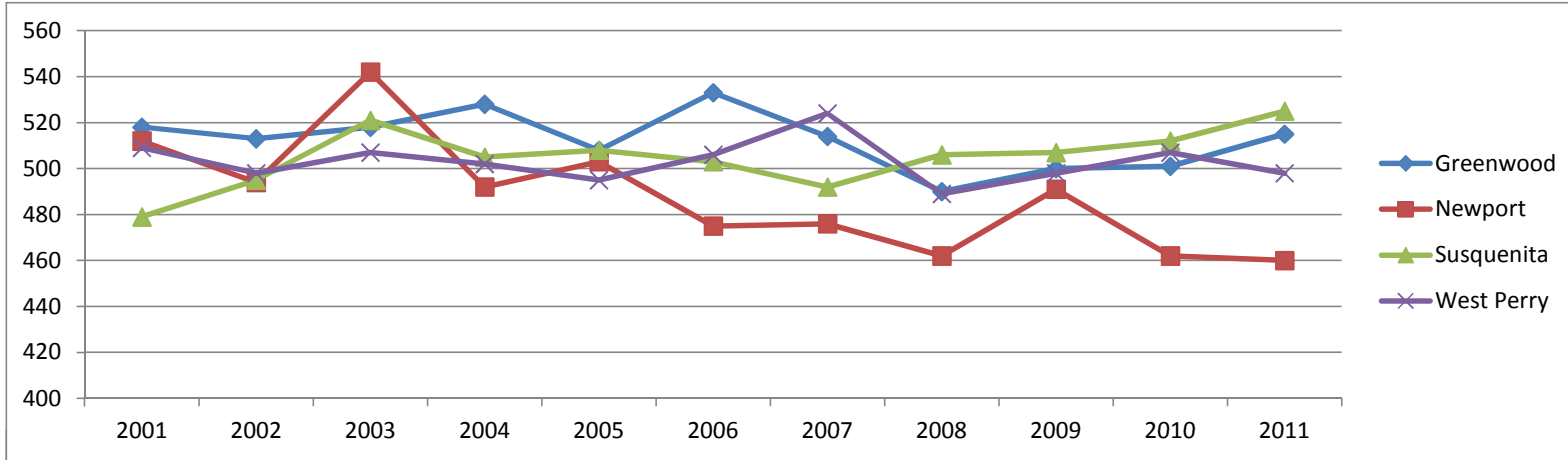
Writing: 493

Mathematics: 515

Critical Reading: 501

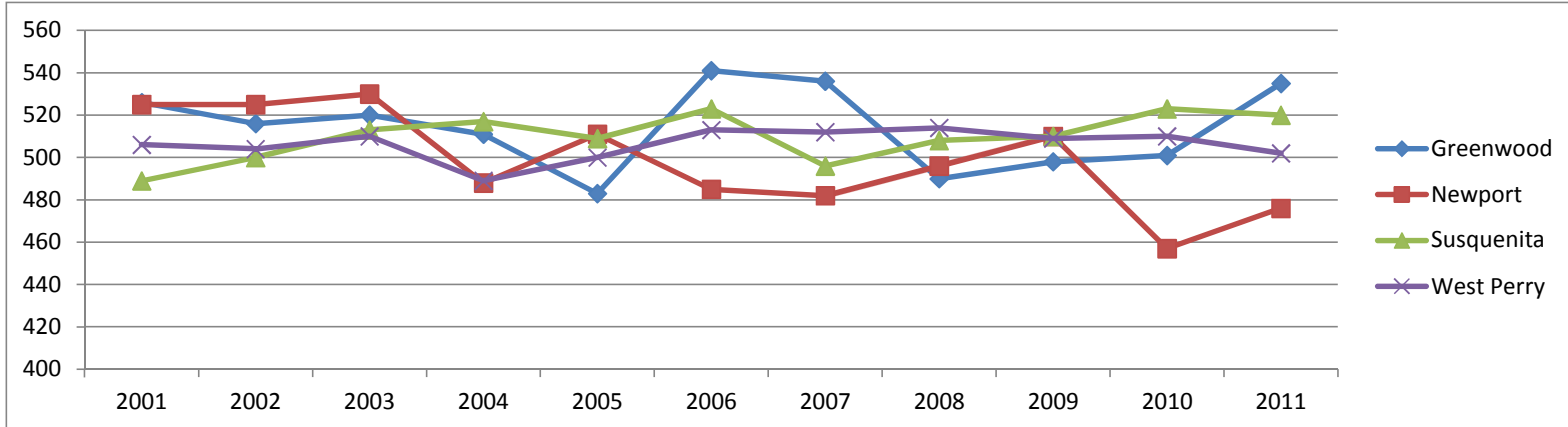
Verbal Average

Greenwood	518	513	518	528	508	533	514	490	500	501	515
Newport	512	494	542	492	503	475	476	462	491	462	460
Susquenita	479	495	521	505	508	503	492	506	507	512	525
West Perry	509	498	507	502	495	506	524	489	498	507	498
	2001	2002	2003	2004	2005	2006	2007	2008	2009	2010	2011



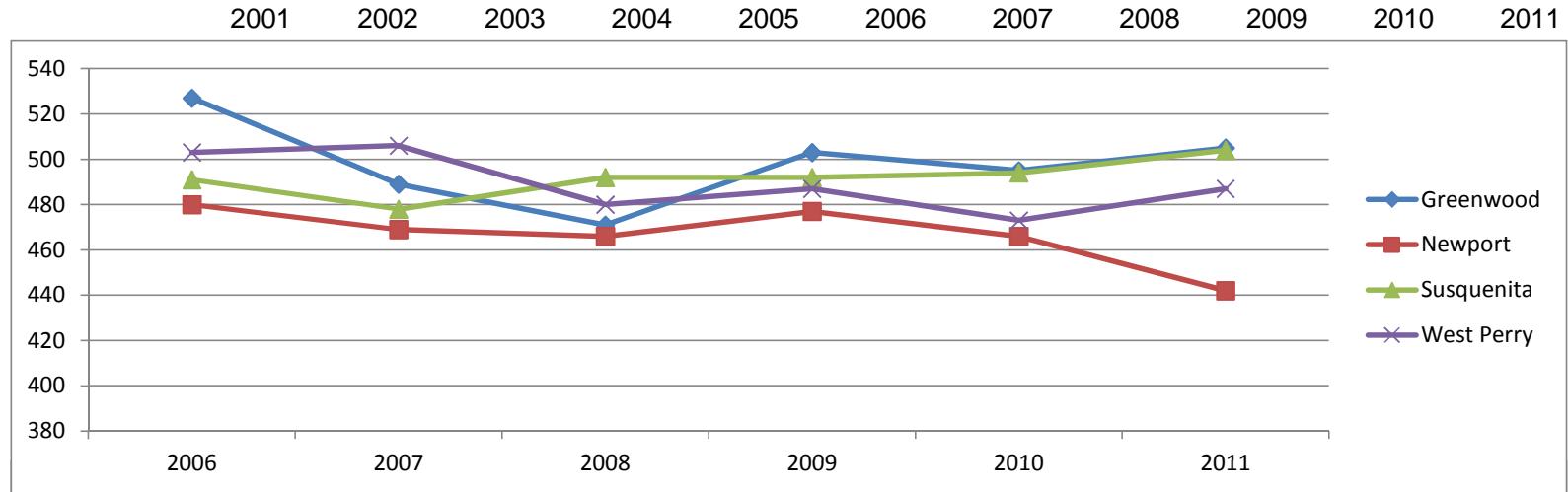
Math Average

Greenwood	526	516	520	511	483	541	536	490	498	501	535
Newport	525	525	530	488	511	485	482	496	510	457	476
Susquenita	489	500	513	517	509	523	496	508	510	523	520
West Perry	506	504	510	489	500	513	512	514	509	510	502
	2001	2002	2003	2004	2005	2006	2007	2008	2009	2010	2011



Writing Average

Greenwood	527	489	471	503	495	505
Newport	480	469	466	477	466	442
Susquenita	491	478	492	492	494	504
West Perry	503	506	480	487	473	487



Number Tested

Greenwood	48	29	40	24	33	31	37	27	24	34	44
Newport	34	38	41	29	46	51	34	39	42	22	28
Susquenita	65	82	91	75	61	67	76	74	81	71	63
West Perry	86	72	98	90	89	93	109	80	72	82	103

