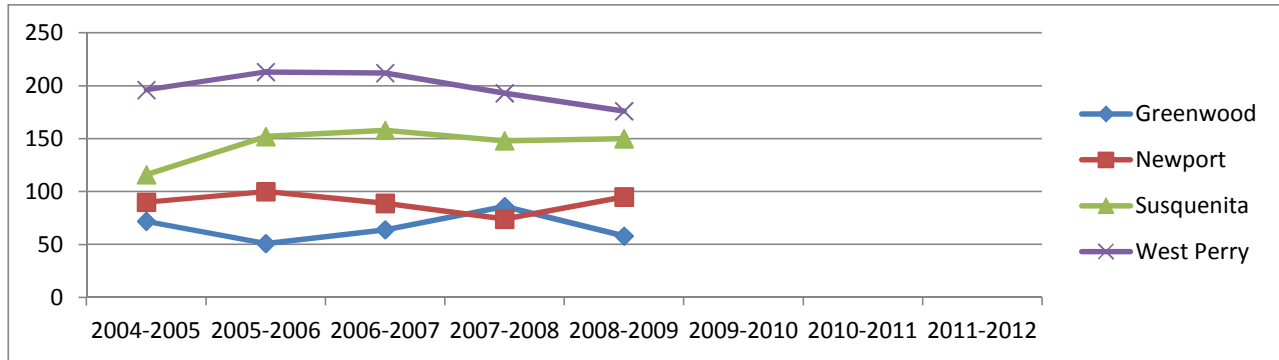


Graduates

	Greenwood School District	Newport School District	Susquenita School District	West Perry School District	State Average
2004-2005					
Total Graduates	72	90	116	196	124,755
Postsec Bound	64	66	70	117	93,907
Percent	65.3%	73.3%	60.3%	59.7%	75.3%
2005-2006					
Total Graduates	51	100	152	213	126,926
Postsec Bound	48	70	104	150	95,312
Percent	94.1%	70.0%	68.4%	70.4%	75.1
2006-2007					
Total Graduates	64	89	158	212	128,603
Postsec Bound	48	49	109	142	97,810
Percent	75.0%	55.1%	69.0%	67.0%	76.1%
2007-2008					
Total Graduates	86	74	148	193	130,296
Postsec Bound	29	54	104	98	97,711
Percent	42.6%	73.0%	70.3%	50.8%	75.0%
2008-2009					
Total Graduates	58	95	150	176	130,647
Postsec Bound	42	71	106	123	99,456
Percent	72.4%	74.7%	70.7%	69.9%	76.1%
2009-2010					
Total Graduates	61	81	157	207	131,343
Graduation Percent	95%				90%
Males	89%				89%
Females	100%				92%
Postsec Bound	47	50	108	137	98,739
Percent	77.0%	61.7%	68.8%	66.2%	75.2%
2010-2011					
Total Graduates					
Postsec Bound					
Percent					

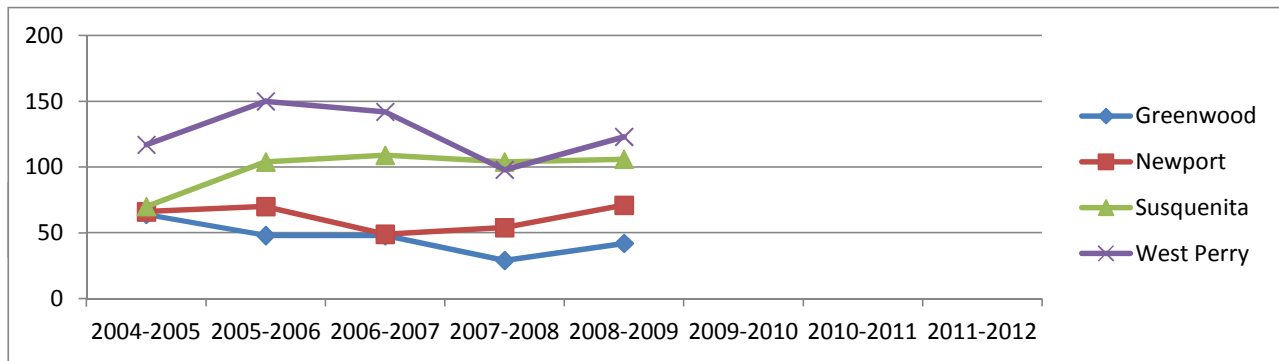
Total Graduates

Greenwood	72	51	64	86	58
Newport	90	100	89	74	95
Susquenita	116	152	158	148	150
West Perry	196	213	212	193	176
	2004-2005	2005-2006	2006-2007	2007-2008	2008-2009



Post Secondary Education Bound

Greenwood	64	48	48	29	42
Newport	66	70	49	54	71
Susquenita	70	104	109	104	106
West Perry	117	150	142	98	123
	2004-2005	2005-2006	2006-2007	2007-2008	2008-2009



Post Secondary Education Bound Percent

Greenwood	65.30%	94.10%	75.00%	42.60%	72.40%
Newport	73.30%	70.00%	55.10%	73.00%	74.70%
Susquenita	60.30%	68.40%	69.00%	70.30%	70.70%
West Perry	59.70%	70.40%	67.00%	50.80%	69.90%
	2004-2005	2005-2006	2006-2007	2007-2008	2008-2009

