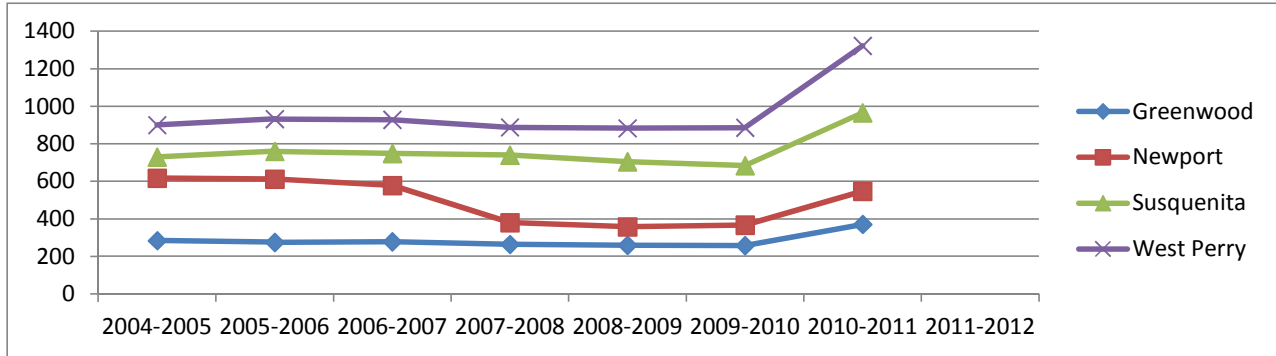


Dropout Rates

	Greenwood School District	Newport School District	Susquenita School District	West Perry School District	State Average
2004-2005					
Enrollment	284	617	730	900	882,908
Male	4	10	13	17	9,940
Female	2	3	12	7	7,238
Total	6	13	25	24	17,178
Rate	2.1%	2.1%	3.4%	2.7%	1.9%
2005-2006					
Enrollment	275	612	760	932	889,226
Male	2	6	15	18	9,753
Female	0	6	5	13	7,076
Total	2	12	20	31	16,829
Rate	0.7%	2.0%	2.6%	3.3%	1.9%
2006-2007					
Enrollment	278	578	749	928	882,837
Male	1	6	11	27	8,328
Female	1	5	7	10	6,145
Total	2	11	18	37	14,473
Rate	0.7%	1.9%	2.4%	4.0%	1.6%
2007-2008					
Enrollment	264	380	740	888	871,941
Male	2	5	8	19	8,963
Female	3	2	7	11	6,521
Total	5	7	15	30	15,484
Rate	1.9%	1.8%	2.0%	3.4%	1.8%
2008-2009					
Enrollment	260	358	705	883	855,667
Male	2	8	6	13	8,078
Female	1	4	4	10	5,970
Total	3	12	10	23	14,048
Rate	1.2%	3.4%	1.4%	2.6%	1.6%
2009-2010					
Enrollment	258	367	684	886	845,119
Male	1	3	5	11	7,251
Female	1	6	4	8	5,411
Total	2	9	9	19	12,662
Rate	0.78%	2.45%	1.32%	2.14%	1.5%
2010-2011					
Enrollment	371	547	966	1,322	793,088
Male	1	3	5	11	6,812
Female	1	6	4	9	5,037
Total	2	9	9	20	11,849
Rate	0.54%	1.65%	0.93%	1.51%	1.49%

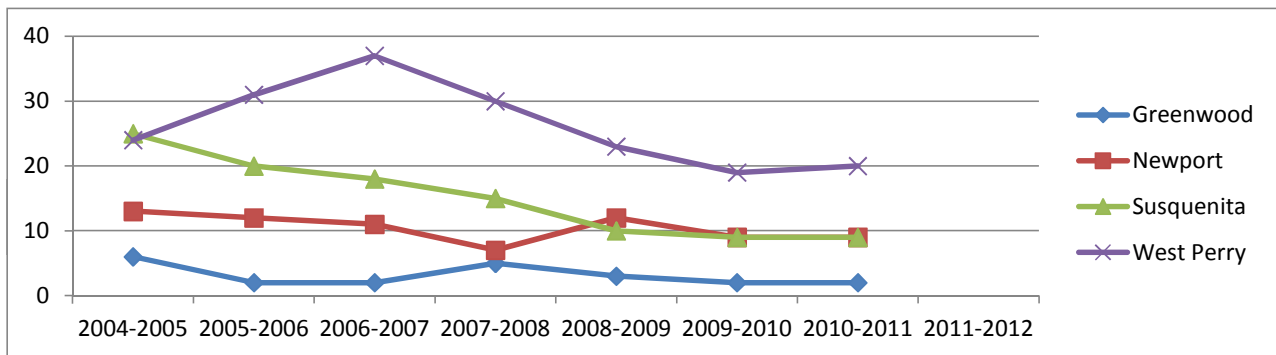
Students Enrolled

Greenwood	284	275	278	264	260	258	371
Newport	617	612	578	380	358	367	547
Susquenita	730	760	749	740	705	684	966
West Perry	900	932	928	888	883	886	1,322
	2004-2005	2005-2006	2006-2007	2007-2008	2008-2009	2009-2010	2010-2011



Student Dropout Rate

Greenwood	6	2	2	5	3	2	2
Newport	13	12	11	7	12	9	9
Susquenita	25	20	18	15	10	9	9
West Perry	24	31	37	30	23	19	20
	2004-2005	2005-2006	2006-2007	2007-2008	2008-2009	2009-2010	2010-2011



Student Dropout Percentage

Greenwood	2.11%	0.70%	0.70%	1.90%	1.20%	0.78%	0.54%
Newport	2.10%	2.00%	0.02	1.80%	3.40%	2.45%	1.65%
Susquenita	3.40%	2.60%	2.40%	2.00%	1.40%	1.32%	0.93%
West Perry	2.70%	3.30%	4.00%	3.40%	2.60%	2.14%	1.51%
	2004-2005	2005-2006	2006-2007	2007-2008	2008-2009	2009-2010	2010-2011

