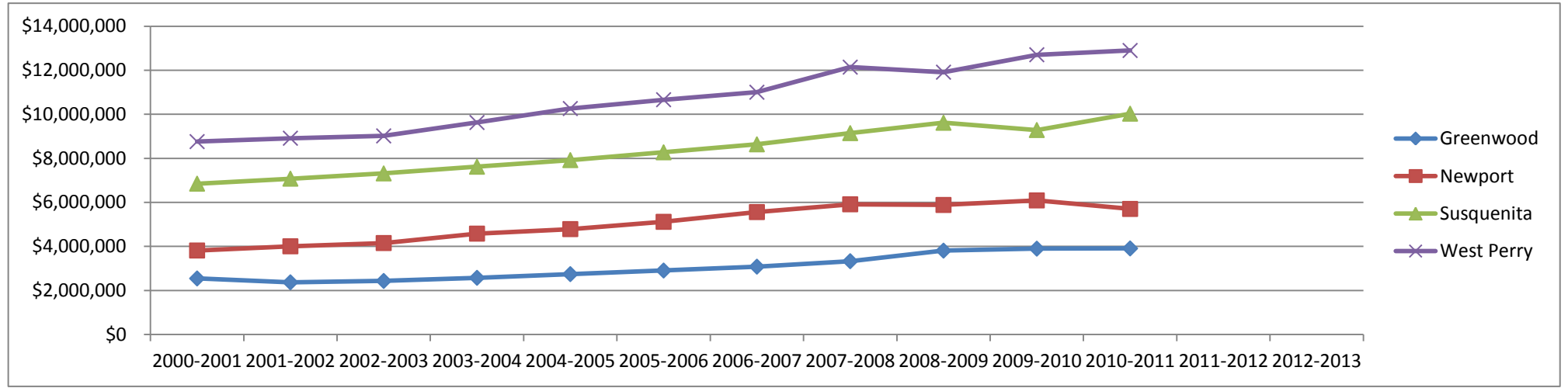


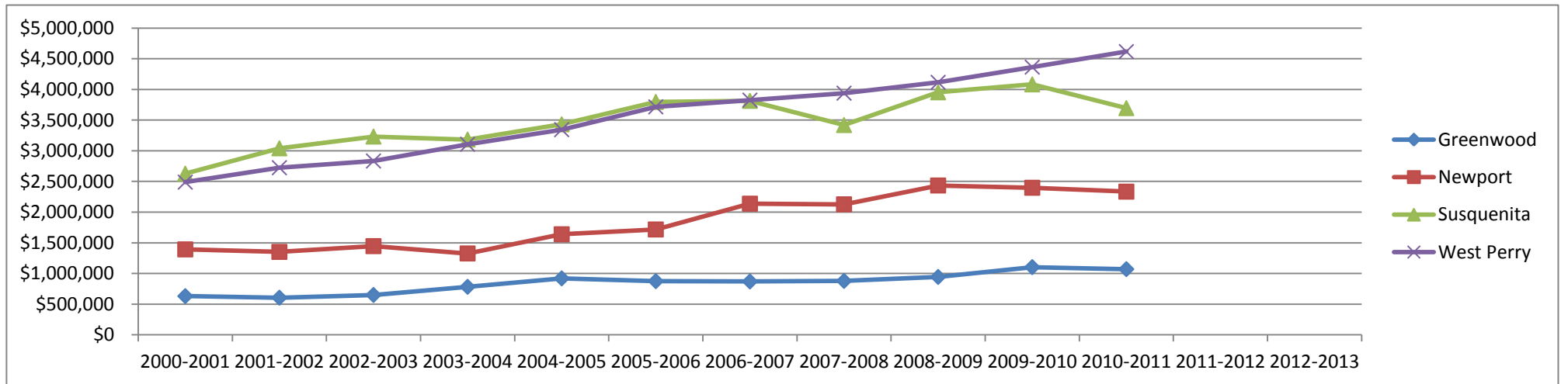
1100 - Regular Education

	2000-2001	2001-2002	2002-2003	2003-2004	2004-2005	2005-2006	2006-2007	2007-2008	2008-2009	2009-2010	2010-2011	2011-2012	2012-2013
Greenwood	\$2,547,225	\$2,372,442.16	\$2,434,050.88	\$2,576,245.51	\$2,743,350.21	\$2,906,463.10	\$3,082,394.88	\$3,330,987.99	\$3,809,852.07	\$3,899,952.50	\$3,910,249.80		
Newport	\$3,815,393	\$4,006,751.74	\$4,154,355.91	\$4,581,839.87	\$4,788,025.51	\$5,117,734.01	\$5,560,845.72	\$5,914,389.01	\$5,883,064.41	\$6,090,287.87	\$5,703,330.72		
Susquenita	\$6,851,010	\$7,077,362.22	\$7,316,267.63	\$7,619,456.65	\$7,920,677.28	\$8,274,260.80	\$8,637,506.18	\$9,145,802.94	\$9,615,043.52	\$9,286,161.07	\$10,029,010.60		
West Perry	\$8,759,885	\$8,913,021.99	\$9,019,052.84	\$9,628,504.63	\$10,261,547.89	\$10,661,724.31	\$11,001,863.66	\$12,140,896.81	\$11,912,120.73	\$12,703,476.14	\$12,897,496.25		



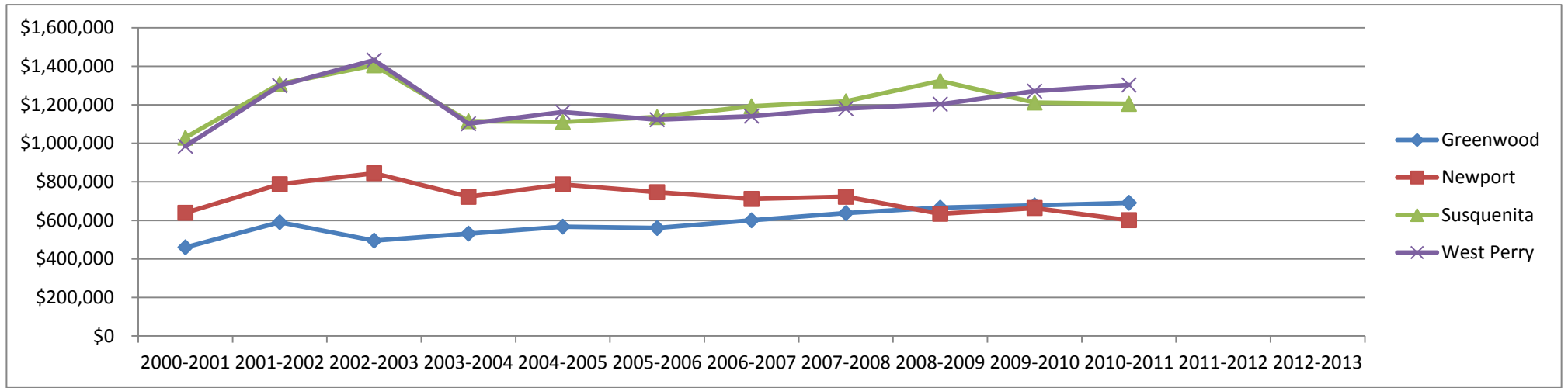
1200 - Special Education

	2000-2001	2001-2002	2002-2003	2003-2004	2004-2005	2005-2006	2006-2007	2007-2008	2008-2009	2009-2010	2010-2011	2011-2012	2012-2013
Greenwood	\$630,713	\$604,998.86	\$649,626.64	\$782,246.09	\$920,352.31	\$874,545.85	\$869,594.51	\$878,396.50	\$942,982.36	\$1,103,504.10	\$1,070,414.40		
Newport	\$1,392,344	\$1,351,215.22	\$1,445,578.79	\$1,326,000.60	\$1,638,850.83	\$1,717,044.23	\$2,137,278.17	\$2,126,796.73	\$2,433,760.73	\$2,396,726.25	\$2,333,657.29		
Susquenita	\$2,627,116	\$3,039,868.67	\$3,231,488.23	\$3,182,707.71	\$3,431,044.24	\$3,795,562.20	\$3,813,414.69	\$3,419,023.36	\$3,952,872.90	\$4,081,823.72	\$3,694,954.52		
West Perry	\$2,488,590	\$2,723,550.36	\$2,833,432.28	\$3,105,945.04	\$3,343,973.62	\$3,715,665.98	\$3,825,223.02	\$3,938,782.67	\$4,114,814.03	\$4,363,040.07	\$4,616,686.94		



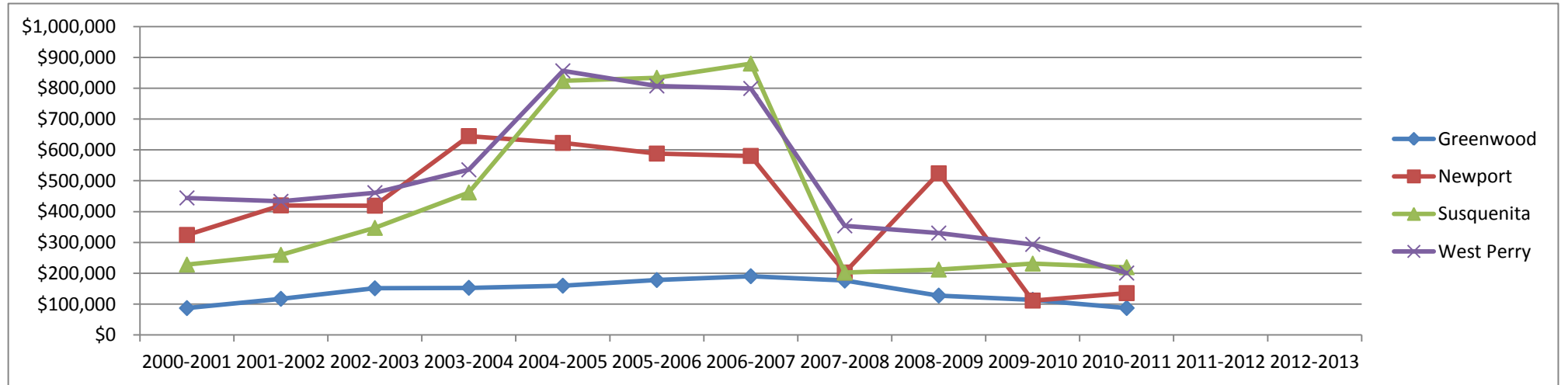
1300 - Vocational Education

Greenwood	\$460,524	\$590,904.61	\$495,238.52	\$531,470.72	\$567,495.34	\$560,530.52	\$600,517.34	\$637,755.21	\$666,238.24	\$678,215.88	\$691,368.59		
Newport	\$639,387	\$787,520.22	\$844,855.00	\$722,749.91	\$786,836.71	\$746,354.71	\$711,591.52	\$722,900.76	\$634,586.48	\$664,532.42	\$601,343.90		
Susquenita	\$1,029,439	\$1,308,038.08	\$1,405,041.65	\$1,114,930.93	\$1,111,051.11	\$1,136,173.39	\$1,192,296.47	\$1,217,514.63	\$1,323,423.36	\$1,211,829.53	\$1,204,741.28		
West Perry	\$984,610	\$1,299,378.61	\$1,432,236.45	\$1,101,624.53	\$1,162,018.94	\$1,122,503.22	\$1,141,052.05	\$1,180,060.22	\$1,202,984.93	\$1,270,509.39	\$1,302,727.72		
	2000-2001	2001-2002	2002-2003	2003-2004	2004-2005	2005-2006	2006-2007	2007-2008	2008-2009	2009-2010	2010-2011	2011-2012	2012-2013



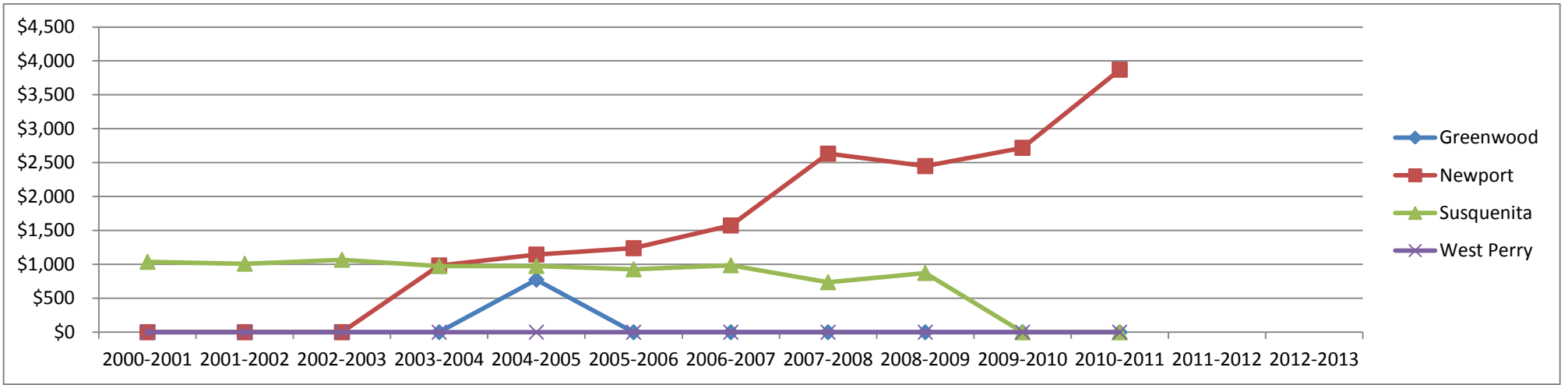
1400 - Other Instruction

Greenwood	\$87,047	\$117,192.30	\$151,293.64	\$152,791.82	\$159,600.00	\$178,032.94	\$190,469.28	\$176,180.75	\$127,647.28	\$114,007.32	\$87,316.98		
Newport	\$324,269	\$420,122.92	\$419,098.95	\$644,709.48	\$622,575.72	\$588,047.75	\$580,419.46	\$202,471.89	\$524,070.76	\$111,508.70	\$135,583.93		
Susquenita	\$228,181	\$259,858.12	\$347,220.10	\$462,000.96	\$824,280.39	\$834,017.91	\$879,819.03	\$202,136.87	\$212,002.88	\$231,303.24	\$219,644.57		
West Perry	\$444,269	\$433,098.88	\$461,156.88	\$535,475.60	\$856,196.52	\$807,418.40	\$799,180.65	\$353,735.22	\$330,201.08	\$293,648.51	\$200,778.49		
	2000-2001	2001-2002	2002-2003	2003-2004	2004-2005	2005-2006	2006-2007	2007-2008	2008-2009	2009-2010	2010-2011	2011-2012	2012-2013



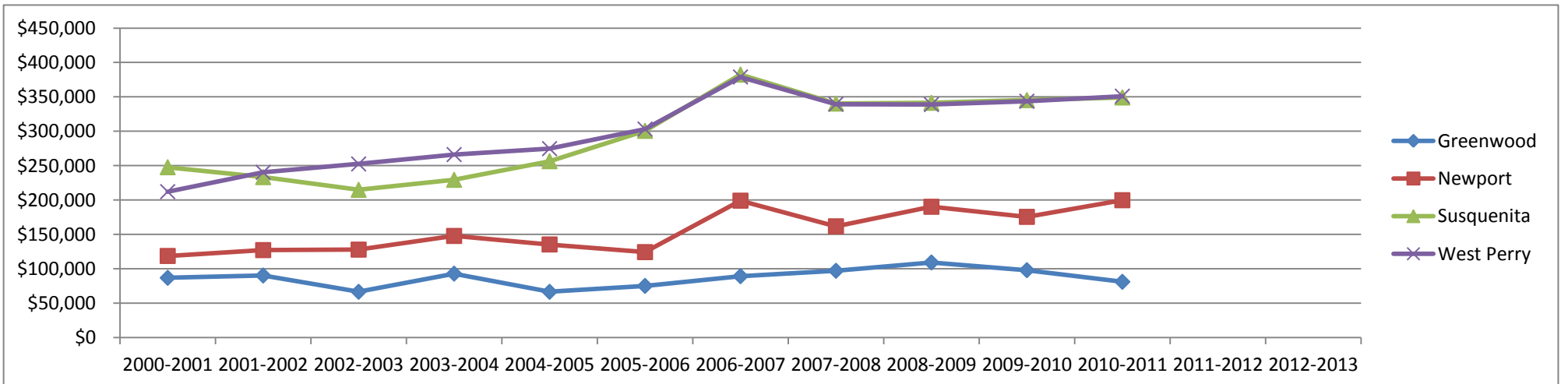
1600 - Adult Education

Greenwood	\$0	\$0	\$0	\$0	\$773.97	\$0	\$0	\$0	\$0	\$0	\$0		
Newport	\$0	\$0	\$0	\$983.97	\$1,145.25	\$1,238.48	\$1,574.26	\$2,632.59	\$2,449.66	\$2,719.22	\$3,870.92		
Susquenita	\$1,038	\$1,010.18	\$1,068.16	\$975.24	\$976.67	\$927.99	\$987.63	\$737.62	\$873.68	\$0	\$0		
West Perry	\$0	\$0	\$0	\$0	\$0	\$0	\$0	\$0	\$0	\$0	\$0		
	2000-2001	2001-2002	2002-2003	2003-2004	2004-2005	2005-2006	2006-2007	2007-2008	2008-2009	2009-2010	2010-2011	2011-2012	2012-2013



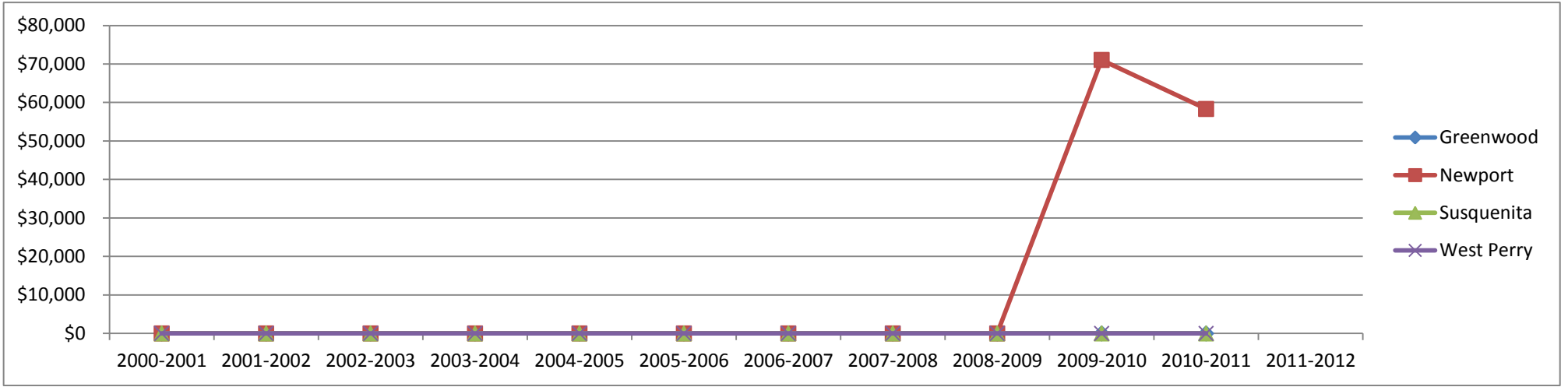
1700 - Higher Education

Greenwood	\$86,898	\$90,307.00	\$66,601.50	\$92,997.00	\$66,591.25	\$75,183.00	\$89,296.00	\$97,165.00	\$109,267.00	\$98,045.50	\$81,138.50		
Newport	\$118,708	\$127,232.75	\$127,918.75	\$147,814.50	\$135,412.25	\$124,283.00	\$199,118.94	\$161,820.50	\$190,226.50	\$175,536.75	\$199,776.75		
Susquenita	\$247,687	\$233,317.75	\$214,875.25	\$229,407.50	\$256,479.25	\$300,642.00	\$382,417.00	\$340,254.75	\$341,383.25	\$345,284.25	\$349,125.25		
West Perry	\$212,181	\$240,292.00	\$252,512.25	\$266,135.00	\$274,756.25	\$303,220.00	\$378,923.25	\$339,455.75	\$338,899.75	\$343,680.81	\$351,051.75		
	2000-2001	2001-2002	2002-2003	2003-2004	2004-2005	2005-2006	2006-2007	2007-2008	2008-2009	2009-2010	2010-2011	2011-2012	2012-2013



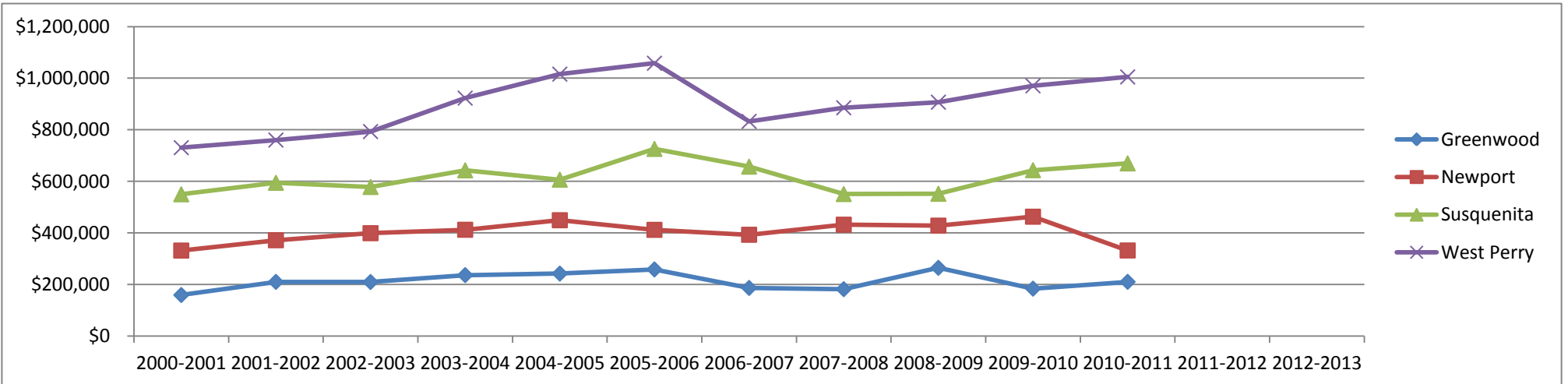
1800 - Pre-Kindergarten

	2000-2001	2001-2002	2002-2003	2003-2004	2004-2005	2005-2006	2006-2007	2007-2008	2008-2009	2009-2010	2010-2011	2011-2012	2012-2013
Greenwood	\$0	\$0	\$0	\$0	\$0	\$0	\$0	\$0	\$0	\$0	\$0	\$0	\$0
Newport	\$0	\$0	\$0	\$0	\$0	\$0	\$0	\$0	\$0	\$0	\$71,050.91	\$58,316.42	
Susquenita	\$0	\$0	\$0	\$0	\$0	\$0	\$0	\$0	\$0	\$0	\$0	\$0	\$0
West Perry	\$0	\$0	\$0	\$0	\$0	\$0	\$0	\$0	\$0	\$0	\$0	\$0	\$0



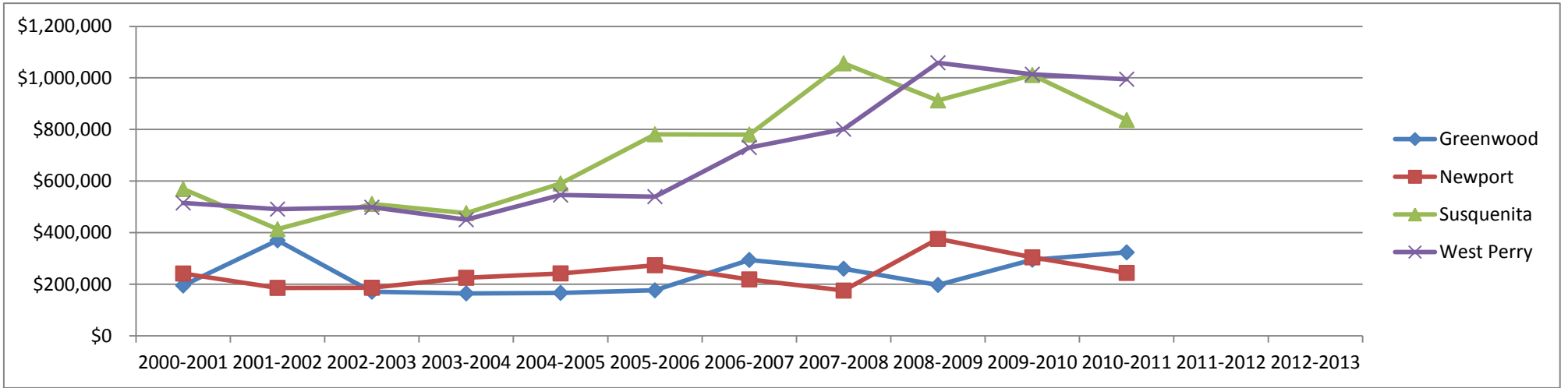
2100 - Pupil Personnel

	2000-2001	2001-2002	2002-2003	2003-2004	2004-2005	2005-2006	2006-2007	2007-2008	2008-2009	2009-2010	2010-2011	2011-2012	2012-2013
Greenwood	\$159,266	\$210,260.90	\$209,693.57	\$236,512.26	\$242,318.84	\$258,590.25	\$186,766.75	\$181,976.73	\$264,743.67	\$184,016.91	\$210,419.05		
Newport	\$331,687	\$371,749.06	\$399,023.03	\$412,334.45	\$449,298.38	\$411,994.50	\$392,872.02	\$431,996.50	\$428,351.06	\$462,945.95	\$332,028.91		
Susquenita	\$549,782	\$594,289.94	\$578,126.10	\$642,633.91	\$606,509.27	\$725,773.55	\$657,072.76	\$550,736.99	\$551,796.60	\$643,256.58	\$669,510.54		
West Perry	\$730,583	\$760,196.81	\$793,093.63	\$922,745.19	\$1,015,644.83	\$1,057,962.00	\$832,364.23	\$885,237.33	\$906,950.86	\$970,305.49	\$1,004,852.06		



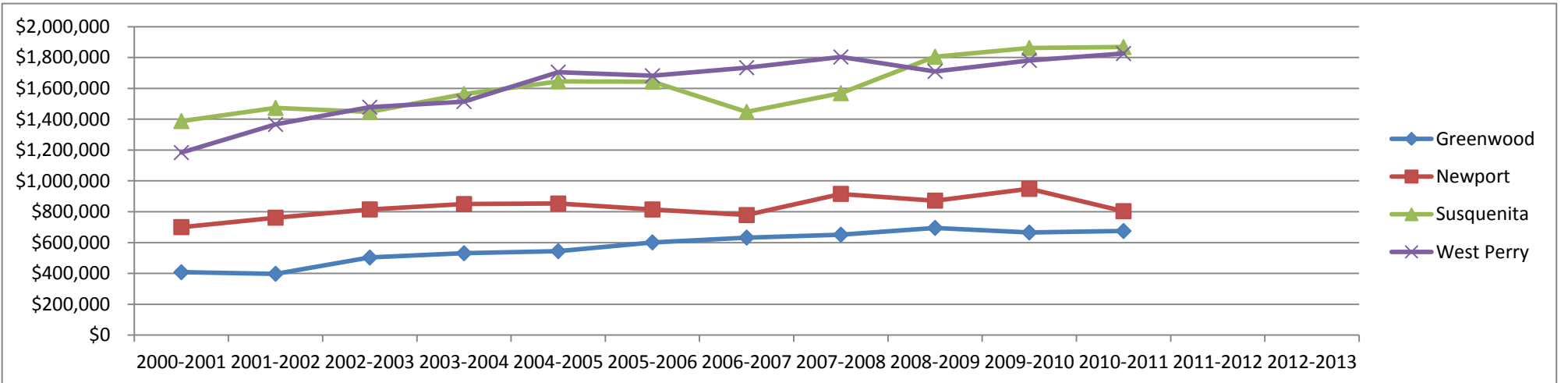
2200 - Instructional Staff

Greenwood	\$195,480	\$370,354.97	\$171,094.89	\$164,859.58	\$166,664.63	\$176,689.39	\$294,416.39	\$260,385.28	\$197,488.40	\$295,191.33	\$323,706.47		
Newport	\$241,801	\$186,082.03	\$186,585.39	\$225,236.69	\$242,256.74	\$273,859.02	\$218,930.68	\$175,643.45	\$376,016.36	\$304,425.09	\$244,045.37		
Susquenita	\$569,187	\$413,575.18	\$511,506.64	\$475,934.05	\$590,684.72	\$781,456.98	\$780,449.64	\$1,056,406.84	\$912,714.43	\$1,011,131.33	\$836,931.35		
West Perry	\$515,334	\$491,283.47	\$498,477.68	\$450,429.53	\$545,914.56	\$539,709.14	\$729,938.49	\$801,121.34	\$1,058,547.92	\$1,014,115.35	\$994,940.14		
	2000-2001	2001-2002	2002-2003	2003-2004	2004-2005	2005-2006	2006-2007	2007-2008	2008-2009	2009-2010	2010-2011	2011-2012	2012-2013



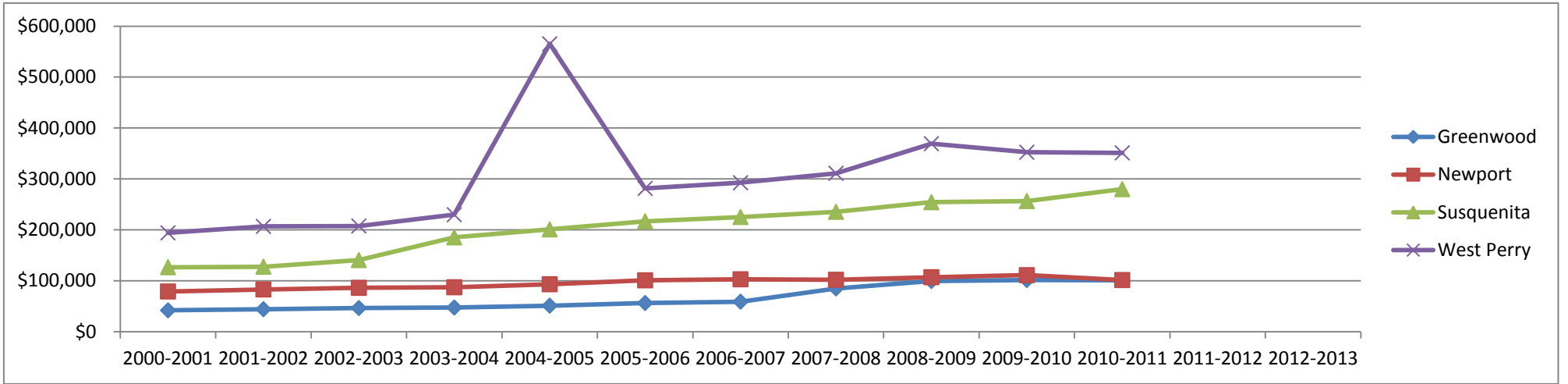
2300 - Administration

Greenwood	\$407,603	\$397,449.85	\$502,975.99	\$530,774.77	\$544,334.41	\$601,164.33	\$632,346.28	\$651,136.67	\$695,084.29	\$665,290.26	\$674,939.08		
Newport	\$700,298	\$761,374.35	\$814,710.46	\$849,596.11	\$852,967.10	\$814,650.62	\$778,110.51	\$915,640.73	\$871,751.00	\$948,098.05	\$803,486.86		
Susquenita	\$1,388,012	\$1,472,886.91	\$1,446,702.61	\$1,563,021.89	\$1,645,425.71	\$1,643,516.22	\$1,447,390.15	\$1,568,564.77	\$1,805,516.08	\$1,861,994.87	\$1,867,644.73		
West Perry	\$1,183,490	\$1,366,147.10	\$1,477,467.33	\$1,514,432.82	\$1,705,292.16	\$1,681,431.01	\$1,733,897.95	\$1,803,177.43	\$1,709,459.17	\$1,781,162.64	\$1,825,614.64		
	2000-2001	2001-2002	2002-2003	2003-2004	2004-2005	2005-2006	2006-2007	2007-2008	2008-2009	2009-2010	2010-2011	2011-2012	2012-2013



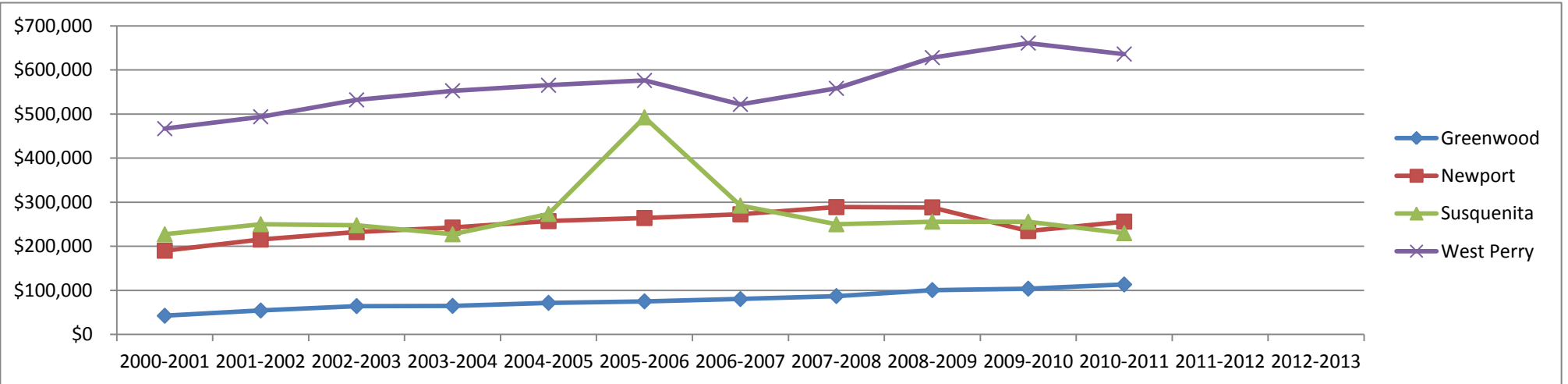
2400 - Pupil Health

Greenwood	\$42,110	\$44,318.68	\$46,596.09	\$47,690.21	\$51,299.93	\$56,515.39	\$59,134.26	\$85,153.49	\$99,732.08	\$101,683.33	\$101,342.03		
Newport	\$79,123	\$83,138.64	\$86,267.72	\$87,450.67	\$93,341.39	\$101,076.56	\$103,062.91	\$102,154.09	\$107,156.64	\$111,220.61	\$101,625.11		
Susquenita	\$126,806	\$127,744.48	\$140,850.08	\$185,367.90	\$201,078.03	\$216,878.41	\$225,346.27	\$235,537.60	\$254,420.62	\$256,675.14	\$280,041.82		
West Perry	\$194,230	\$206,853.97	\$207,725.81	\$229,843.91	\$565,209.16	\$281,525.21	\$292,602.74	\$311,123.77	\$369,176.16	\$352,435.97	\$351,309.98		
	2000-2001	2001-2002	2002-2003	2003-2004	2004-2005	2005-2006	2006-2007	2007-2008	2008-2009	2009-2010	2010-2011	2011-2012	2012-2013



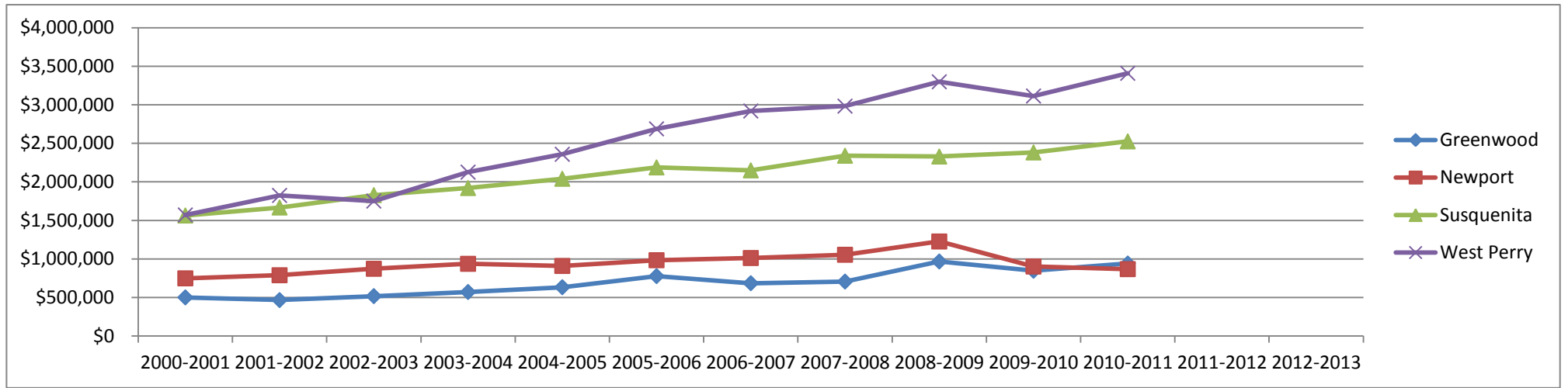
2500 - Business

Greenwood	\$42,407	\$54,323.42	\$64,311.72	\$64,755.44	\$71,668.90	\$75,115.84	\$80,303.16	\$87,065.41	\$100,620.14	\$103,862.19	\$113,338.80		
Newport	\$190,017	\$215,302.98	\$232,141.20	\$242,441.83	\$257,031.13	\$264,098.52	\$272,490.77	\$288,808.30	\$288,174.20	\$234,516.42	\$255,875.33		
Susquenita	\$227,249	\$249,930.00	\$247,739.74	\$227,371.82	\$273,311.01	\$492,527.09	\$292,388.53	\$250,011.40	\$255,892.96	\$255,646.22	\$229,814.75		
West Perry	\$466,866	\$493,723.80	\$532,008.43	\$552,703.84	\$565,209.16	\$575,988.19	\$521,960.52	\$558,162.56	\$627,983.76	\$660,924.39	\$635,995.10		
	2000-2001	2001-2002	2002-2003	2003-2004	2004-2005	2005-2006	2006-2007	2007-2008	2008-2009	2009-2010	2010-2011	2011-2012	2012-2013



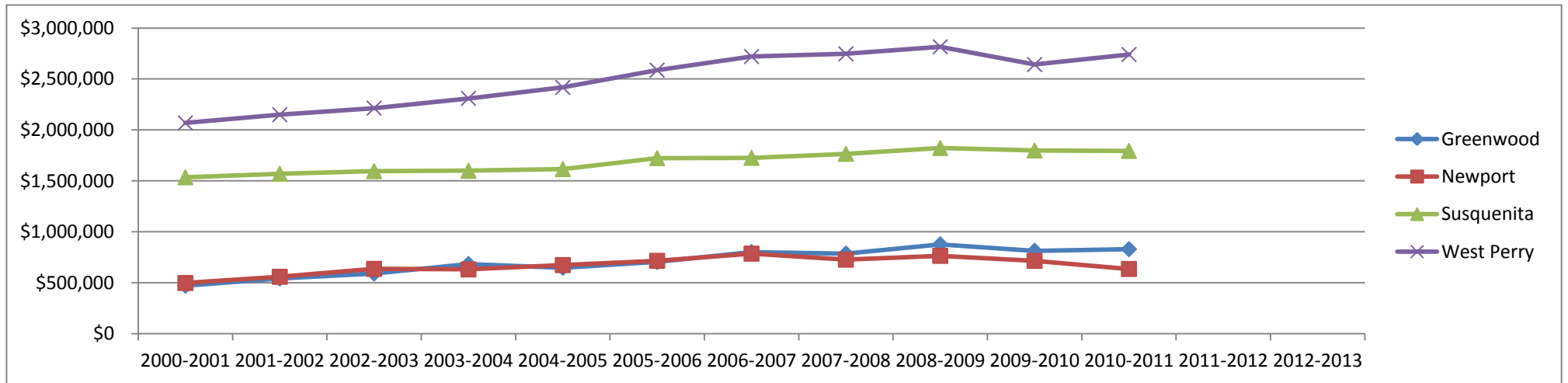
2600 - Operations & Maintenance of Plant

Greenwood	\$501,514	\$466,285.89	\$517,668.05	\$571,465.34	\$633,442.70	\$777,441.33	\$685,270.81	\$706,749.01	\$967,114.44	\$846,922.96	\$940,817.37		
Newport	\$748,284	\$788,657.05	\$872,494.80	\$936,854.07	\$909,181.16	\$983,582.59	\$1,011,889.00	\$1,054,245.27	\$1,226,530.92	\$901,731.06	\$867,809.22		
Susquenita	\$1,563,564	\$1,667,333.58	\$1,828,110.19	\$1,919,875.64	\$2,039,931.24	\$2,187,434.39	\$2,149,241.95	\$2,338,913.71	\$2,328,585.39	\$2,381,448.82	\$2,525,216.67		
West Perry	\$1,570,263	\$1,824,150.91	\$1,750,682.38	\$2,125,913.14	\$2,357,990.97	\$2,687,757.35	\$2,919,333.53	\$2,982,639.61	\$3,298,208.84	\$3,113,985.75	\$3,408,477.04		
	2000-2001	2001-2002	2002-2003	2003-2004	2004-2005	2005-2006	2006-2007	2007-2008	2008-2009	2009-2010	2010-2011	2011-2012	2012-2013



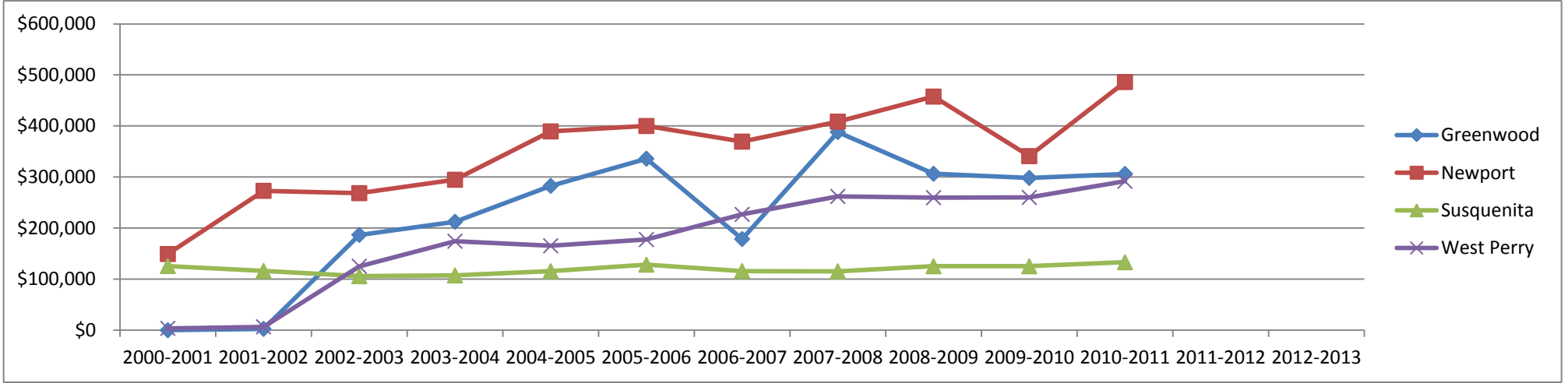
2700 - Student Transportation

Greenwood	\$472,410	\$542,391.45	\$591,173.44	\$683,921.95	\$647,956.09	\$704,442.21	\$801,577.49	\$786,481.69	\$877,164.48	\$813,567.17	\$830,113.58		
Newport	\$497,965	\$558,876.67	\$636,525.67	\$631,326.57	\$673,642.82	\$715,382.69	\$785,771.68	\$726,781.99	\$764,241.56	\$715,265.79	\$635,488.55		
Susquenita	\$1,535,388	\$1,569,916.61	\$1,596,150.53	\$1,599,796.72	\$1,615,407.39	\$1,723,373.43	\$1,725,915.05	\$1,765,601.58	\$1,822,436.99	\$1,798,399.77	\$1,793,941.37		
West Perry	\$2,068,824	\$2,149,589.11	\$2,213,897.34	\$2,309,578.88	\$2,417,509.93	\$2,586,743.69	\$2,720,405.70	\$2,746,434.03	\$2,815,925.85	\$2,641,682.18	\$2,740,320.58		
	2000-2001	2001-2002	2002-2003	2003-2004	2004-2005	2005-2006	2006-2007	2007-2008	2008-2009	2009-2010	2010-2011	2011-2012	2012-2013



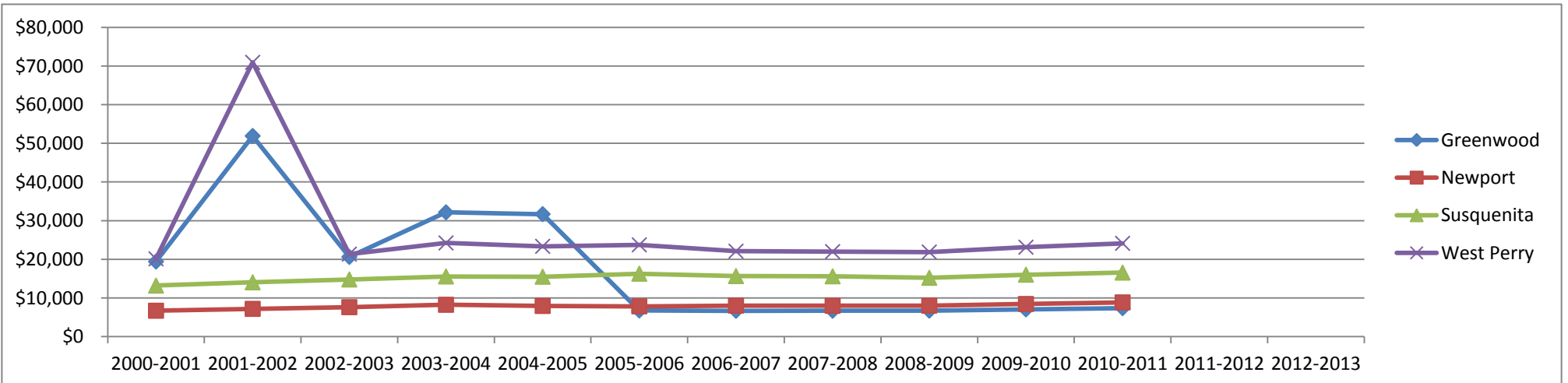
2800 - Support-Central

	2000-2001	2001-2002	2002-2003	2003-2004	2004-2005	2005-2006	2006-2007	2007-2008	2008-2009	2009-2010	2010-2011	2011-2012	2012-2013
Greenwood	\$0	\$2,656.00	\$186,705.98	\$212,408.40	\$282,747.68	\$335,974.20	\$178,613.17	\$388,076.45	\$306,365.93	\$298,295.60	\$306,093.26		
Newport	\$149,238	\$273,027.03	\$268,461.51	\$294,683.39	\$389,392.50	\$399,974.20	\$369,386.17	\$408,534.84	\$457,561.76	\$341,000.96	\$486,132.82		
Susquenita	\$125,715	\$116,057.80	\$105,773.13	\$107,312.84	\$115,656.67	\$128,363.89	\$115,864.58	\$115,346.15	\$125,282.27	\$125,277.68	\$133,133.56		
West Perry	\$3,675	\$6,645.97	\$125,257.96	\$174,390.52	\$165,376.10	\$177,578.38	\$226,820.21	\$262,079.68	\$259,621.71	\$260,060.43	\$291,703.45		



2900 - Other Support

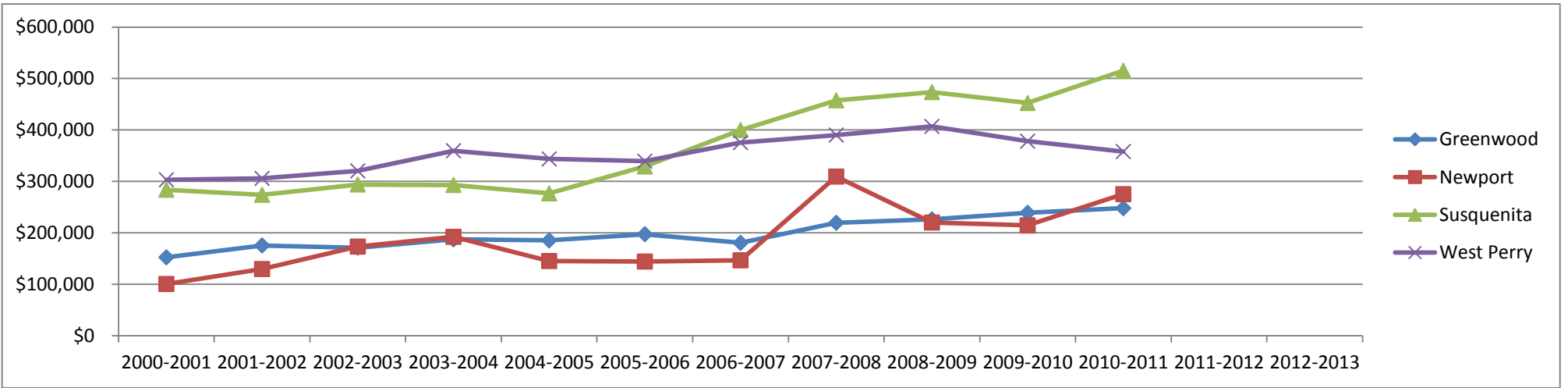
	2000-2001	2001-2002	2002-2003	2003-2004	2004-2005	2005-2006	2006-2007	2007-2008	2008-2009	2009-2010	2010-2011	2011-2012	2012-2013
Greenwood	\$19,416	\$51,899.33	\$20,615.27	\$32,152.25	\$31,678.20	\$6,765.12	\$6,682.89	\$6,696.98	\$6,714.10	\$7,048.43	\$7,374.40		
Newport	\$6,698	\$7,181.94	\$7,616.32	\$8,235.52	\$7,931.71	\$7,835.94	\$8,026.34	\$7,972.44	\$8,010.89	\$8,442.19	\$8,850.56		
Susquenita	\$13,194	\$14,040.39	\$14,779.84	\$15,555.03	\$15,490.68	\$16,282.46	\$15,655.96	\$15,597.00	\$15,215.94	\$16,014.25	\$16,557.82		
West Perry	\$20,120	\$70,938.71	\$21,337.77	\$24,229.83	\$23,359.18	\$23,736.54	\$22,092.07	\$21,985.45	\$21,887.74	\$23,133.92	\$24,131.06		





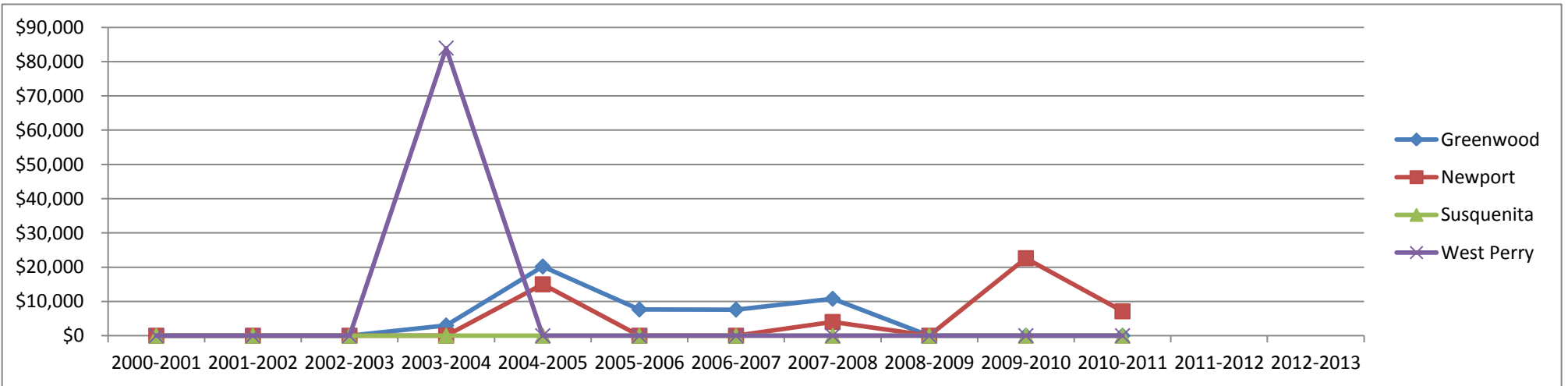
3000 - Non-Instructional

Greenwood	\$152,448	\$175,605.60	\$171,265.18	\$187,374.64	\$185,375.46	\$197,454.28	\$180,571.03	\$219,572.10	\$226,440.44	\$239,048.98	\$248,018.80
Newport	\$100,638	\$129,738.53	\$173,353.41	\$192,346.73	\$145,285.21	\$144,264.70	\$146,692.23	\$309,419.24	\$220,116.53	\$214,575.82	\$275,236.84
Susquenita	\$283,782	\$274,006.40	\$294,100.04	\$293,128.82	\$276,739.87	\$329,136.27	\$399,963.75	\$457,666.03	\$473,587.65	\$452,406.15	\$515,252.77
West Perry	\$303,228	\$305,904.69	\$320,470.65	\$359,622.79	\$343,723.49	\$339,368.60	\$375,484.73	\$390,163.70	\$406,855.01	\$378,222.73	\$358,052.12
	2000-2001	2001-2002	2002-2003	2003-2004	2004-2005	2005-2006	2006-2007	2007-2008	2008-2009	2009-2010	2010-2011



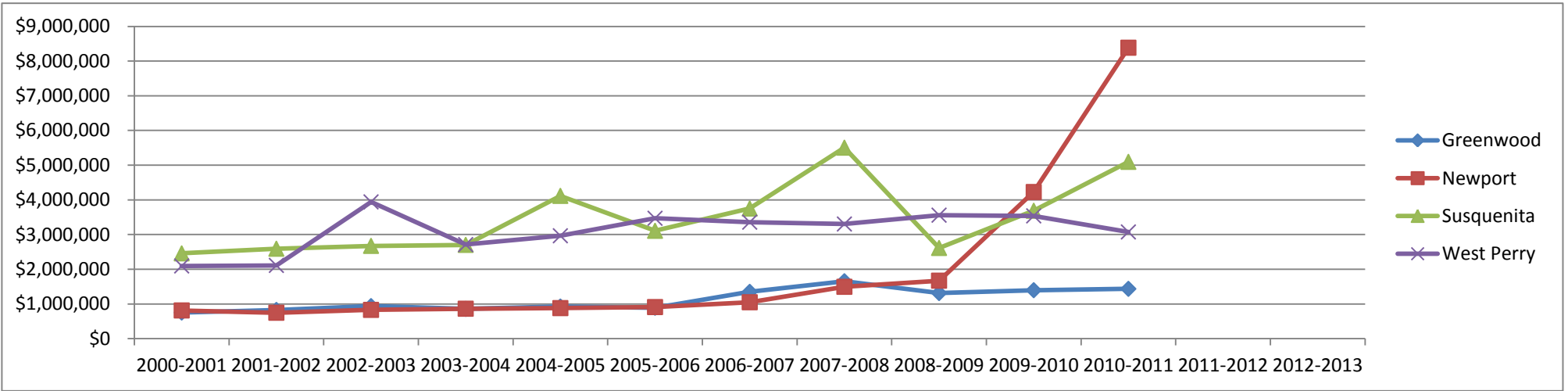
4000 - Facilities Acquisition & Construction

Greenwood	\$0	\$0	\$0	\$2,993.00	\$20,208.64	\$7,651.46	\$7,623.00	\$10,788.00	\$0	\$0	\$0
Newport	\$0	\$0	\$0	\$0	\$15,000.00	\$0	\$0	\$4,000.00	\$0	\$22,625.37	\$7,132.50
Susquenita	\$0	\$0	\$0	\$0	\$0	\$0	\$0	\$0	\$0	\$0	\$0
West Perry	\$0	\$0	\$0	\$83,953.85	\$0	\$0	\$0	\$0	\$0	\$0	\$0
	2000-2001	2001-2002	2002-2003	2003-2004	2004-2005	2005-2006	2006-2007	2007-2008	2008-2009	2009-2010	2010-2011



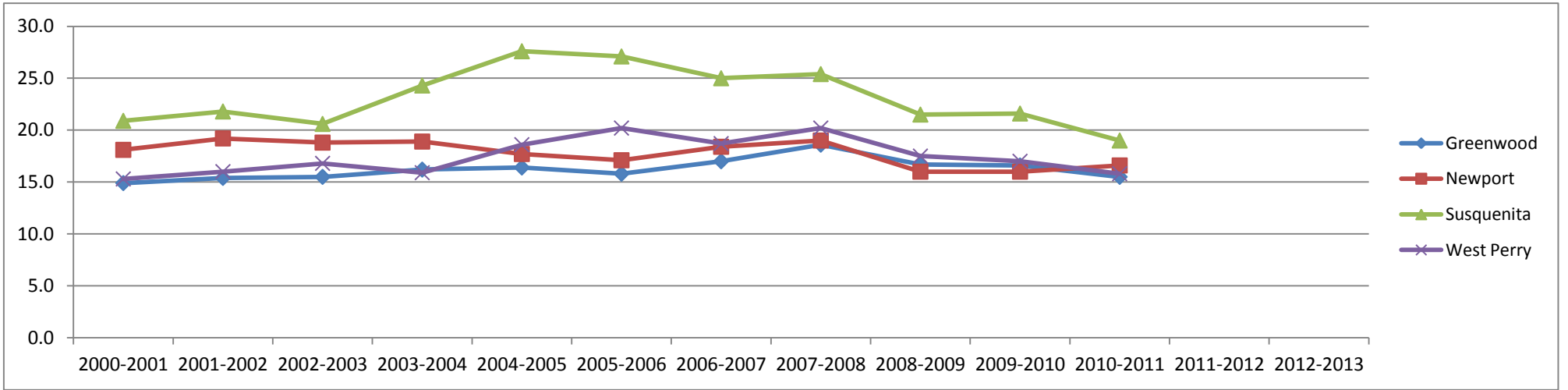
5000 - Other Financing Uses

	2000-2001	2001-2002	2002-2003	2003-2004	2004-2005	2005-2006	2006-2007	2007-2008	2008-2009	2009-2010	2010-2011	2011-2012	2012-2013
Greenwood	\$752,657	\$827,568.26	\$937,553.20	\$856,886.31	\$925,005.98	\$889,236.98	\$1,348,938.62	\$1,654,697.65	\$1,313,436.12	\$1,396,304.88	\$1,435,113.49		
Newport	\$812,659	\$746,459.80	\$828,748.71	\$862,512.36	\$879,742.00	\$909,661.38	\$1,048,666.13	\$1,494,275.06	\$1,670,656.16	\$4,226,299.13	\$8,385,654.22		
Susquenita	\$2,457,821	\$2,591,765.18	\$2,673,350.98	\$2,702,641.21	\$4,114,782.28	\$3,108,104.94	\$3,749,684.41	\$5,504,671.94	\$2,613,566.66	\$3,686,660.00	\$5,095,993.98		
West Perry	\$2,095,589	\$2,110,882.66	\$3,940,626.21	\$2,711,288.39	\$2,964,906.79	\$3,469,540.75	\$3,356,923.85	\$3,304,277.73	\$3,558,744.02	\$3,538,387.94	\$3,075,333.36		



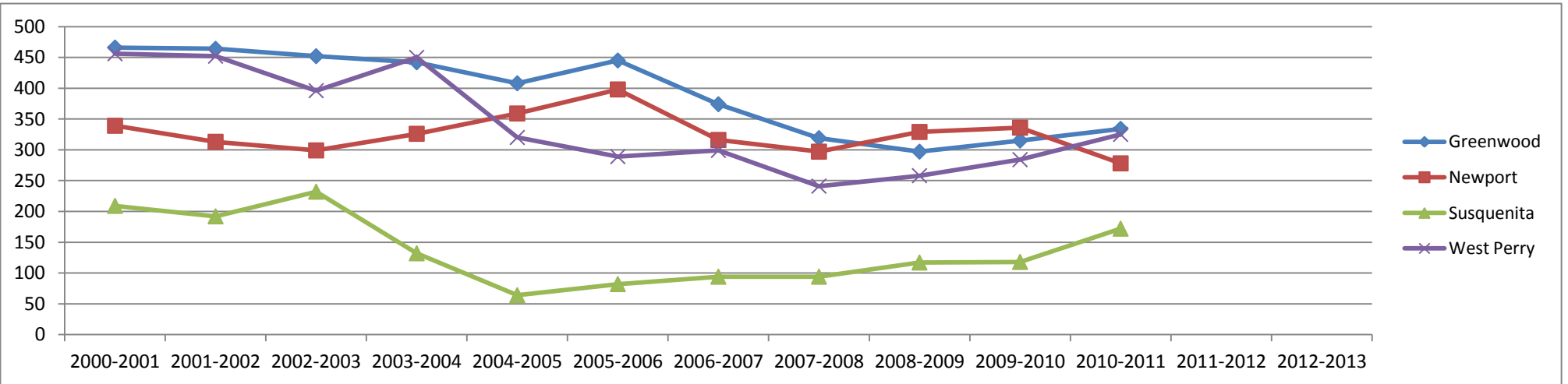
2000-2001 Equalized Mills

	2000-2001	2001-2002	2002-2003	2003-2004	2004-2005	2005-2006	2006-2007	2007-2008	2008-2009	2009-2010	2010-2011	2011-2012	2012-2013
Greenwood	14.9	15.4	15.5	16.2	16.4	15.8	17.0	18.6	16.7	16.6	15.5		
Newport	18.1	19.2	18.8	18.9	17.7	17.1	18.4	19.0	16.0	16.0	16.6		
Susquenita	20.9	21.8	20.6	24.3	27.6	27.1	25.0	25.4	21.5	21.6	19.0		
West Perry	15.3	16.0	16.8	15.9	18.6	20.2	18.7	20.2	17.5	17.0	15.8		



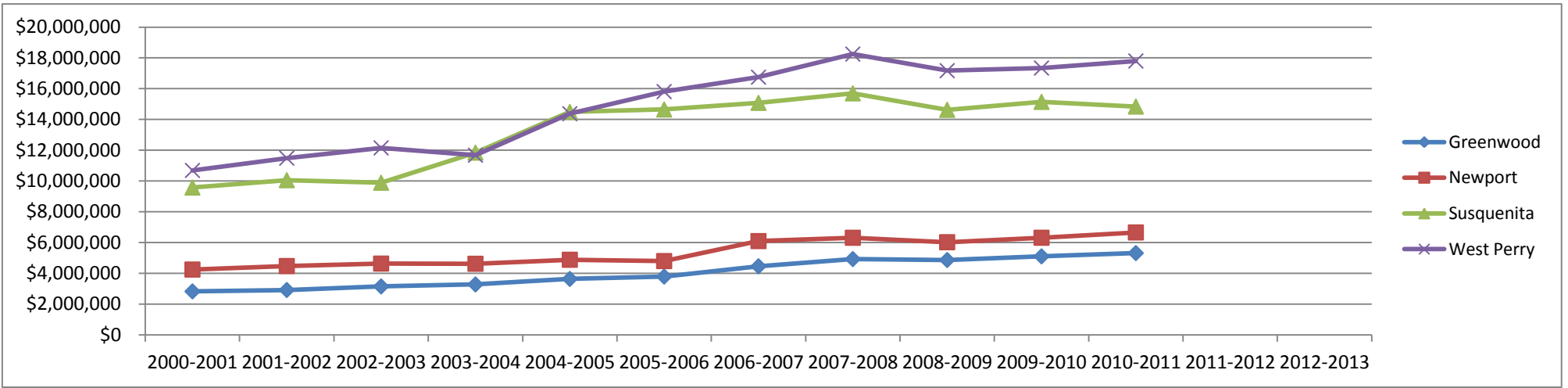
Rank

	2000-2001	2001-2002	2002-2003	2003-2004	2004-2005	2005-2006	2006-2007	2007-2008	2008-2009	2009-2010	2010-2011	2011-2012	2012-2013
Greenwood	466	464	452	442	408	445	374	319	297	315	334		
Newport	339	313	299	326	359	398	316	297	329	336	278		
Susquenita	209	192	232	132	64	82	94	94	117	118	172		
West Perry	456	452	396	450	320	289	299	241	258	284	325		



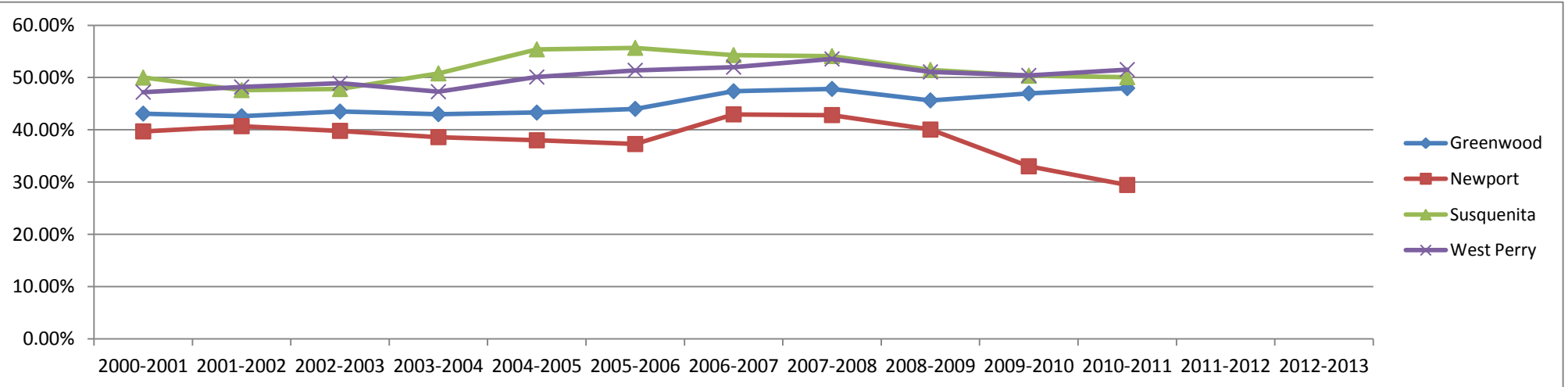
6000 Total Local Taxes and Revenues

	2000-2001	2001-2002	2002-2003	2003-2004	2004-2005	2005-2006	2006-2007	2007-2008	2008-2009	2009-2010	2010-2011	2011-2012	2012-2013
Greenwood	\$2,829,975	\$2,921,142.21	\$3,152,071.26	\$3,281,806.83	\$3,639,104.30	\$3,791,793.66	\$4,463,167.40	\$4,929,817.28	\$4,869,469.00	\$5,105,953.34	\$5,319,054.96		
Newport	\$4,250,089	\$4,478,238.53	\$4,636,270.42	\$4,625,000.91	\$4,886,153.41	\$4,800,598.14	\$6,099,227.48	\$6,313,510.43	\$6,025,733.62	\$6,315,593.24	\$6,659,366.60		
Susquenita	\$9,576,718	\$10,054,994.70	\$9,890,420.32	\$11,845,855.55	\$14,492,081.08	\$14,650,828.14	\$15,079,679.17	\$15,695,512.44	\$14,626,241.93	\$15,142,082.62	\$14,838,540.78		
West Perry	\$10,689,278	\$11,487,524.53	\$12,154,533.07	\$11,678,227.75	\$14,373,620.15	\$15,811,973.25	\$16,749,671.79	\$18,248,463.71	\$17,171,580.56	\$17,341,082.37	\$17,799,813.69		



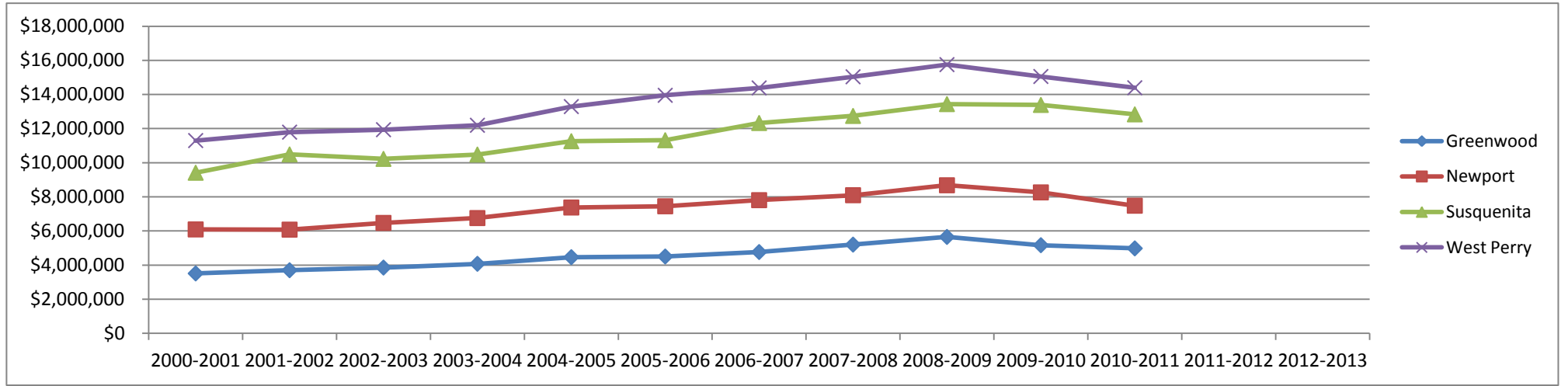
Local Taxes and Revenue Percent of Total Revenues

	2000-2001	2001-2002	2002-2003	2003-2004	2004-2005	2005-2006	2006-2007	2007-2008	2008-2009	2009-2010	2010-2011	2011-2012	2012-2013
Greenwood	43.10%	42.60%	43.50%	43.00%	43.30%	44.01%	47.38%	47.83%	45.63%	46.98%	47.97%		
Newport	39.70%	40.70%	39.80%	38.60%	38.00%	37.28%	42.96%	42.82%	40.05%	33.02%	29.45%		
Susquenita	50.00%	47.60%	47.80%	50.80%	55.40%	55.68%	54.30%	54.11%	51.46%	50.35%	50.07%		
West Perry	47.20%	48.20%	48.90%	47.30%	50.10%	51.38%	52.00%	53.56%	51.08%	50.40%	51.52%		



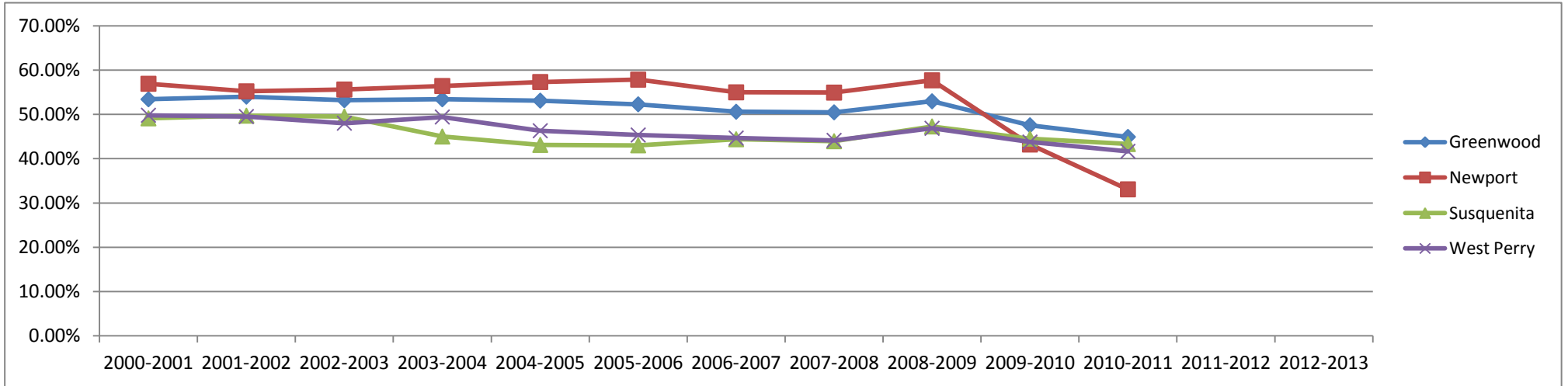
7000 Total State Revenues

	2000-2001	2001-2002	2002-2003	2003-2004	2004-2005	2005-2006	2006-2007	2007-2008	2008-2009	2009-2010	2010-2011	2011-2012	2012-2013
Greenwood	\$3,510,671	\$3,698,432.54	\$3,853,248.04	\$4,074,416.98	\$4,464,075.93	\$4,503,552.52	\$4,765,464.24	\$5,200,392.13	\$5,650,443.00	\$5,165,592.80	\$4,979,286.58		
Newport	\$6,090,186	\$6,078,024.20	\$6,470,504.83	\$6,756,144.43	\$7,375,215.81	\$7,447,039.42	\$7,804,971.77	\$8,094,829.04	\$8,677,877.02	\$8,259,664.40	\$7,479,615.51		
Susquenita	\$9,412,210	\$10,485,737.46	\$10,224,446.18	\$10,479,585.39	\$11,260,622.26	\$11,318,320.16	\$12,326,271.76	\$12,742,086.15	\$13,434,550.21	\$13,386,046.30	\$12,834,330.07		
West Perry	\$11,298,844	\$11,790,692.97	\$11,936,231.10	\$12,193,933.18	\$13,288,998.15	\$13,952,560.74	\$14,382,507.65	\$15,037,701.06	\$15,748,969.00	\$15,053,588.58	\$14,391,601.89		



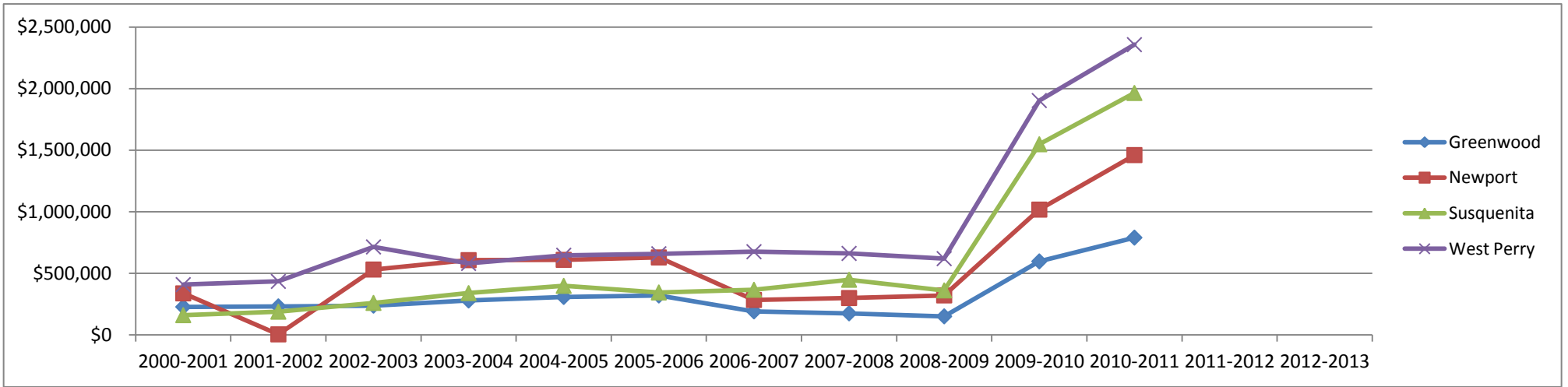
State Revenues Percent of Total Revenues

	2000-2001	2001-2002	2002-2003	2003-2004	2004-2005	2005-2006	2006-2007	2007-2008	2008-2009	2009-2010	2010-2011	2011-2012	2012-2013
Greenwood	53.40%	54.00%	53.20%	53.40%	53.10%	52.27%	50.59%	50.46%	52.95%	47.53%	44.91%		
Newport	56.90%	55.20%	55.60%	56.40%	57.30%	57.83%	54.97%	54.91%	57.68%	43.19%	33.07%		
Susquenita	49.10%	49.70%	49.50%	45.00%	43.10%	43.01%	44.38%	43.93%	47.27%	44.51%	43.30%		
West Perry	49.80%	49.50%	48.00%	49.40%	46.30%	45.34%	44.65%	44.13%	46.85%	43.75%	41.66%		



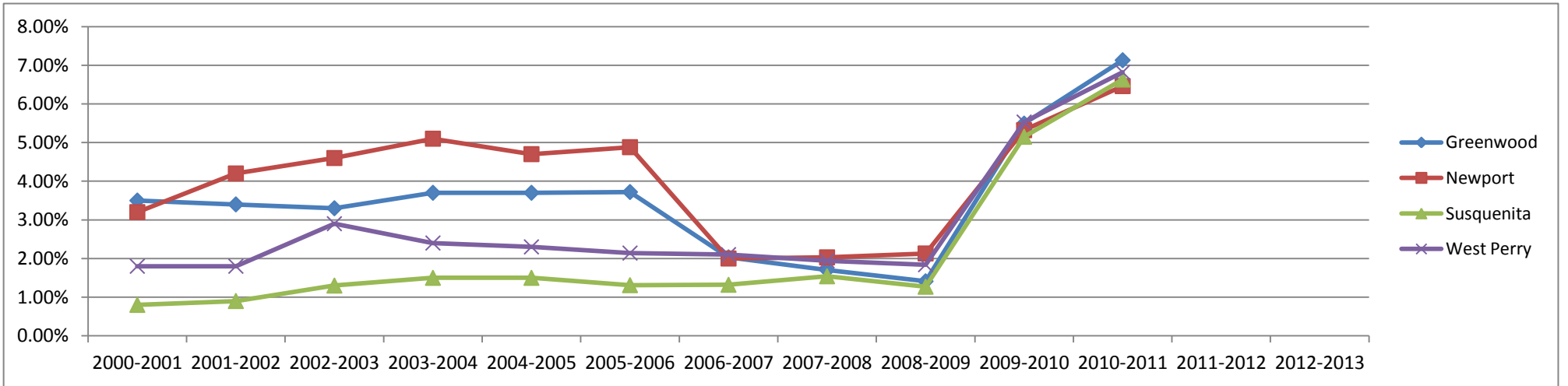
8000 Total Federal Revenues

	2000-2001	2001-2002	2002-2003	2003-2004	2004-2005	2005-2006	2006-2007	2007-2008	2008-2009	2009-2010	2010-2011	2011-2012	2012-2013
Greenwood	\$227,709	\$232,027.55	\$237,662.05	\$279,662.63	\$308,108.87	\$320,212.80	\$191,161.30	\$175,323.29	\$150,908.45	\$597,002.42	\$790,069.89		
Newport	\$337,368	458433.75%	\$530,855.73	\$607,093.57	\$609,493.23	\$628,910.70	\$283,877.09	\$299,336.42	\$320,772.06	\$1,017,414.96	\$1,460,136.20		
Susquenita	\$160,446	\$188,545.87	\$259,896.00	\$339,532.96	\$398,282.04	\$344,944.00	\$366,625.93	\$447,692.00	\$361,506.95	\$1,548,157.09	\$1,964,489.54		
West Perry	\$408,336	\$434,596.88	\$714,252.39	\$580,244.41	\$646,792.20	\$658,618.33	\$675,403.94	\$661,539.94	\$619,156.62	\$1,902,942.47	\$2,356,792.01		



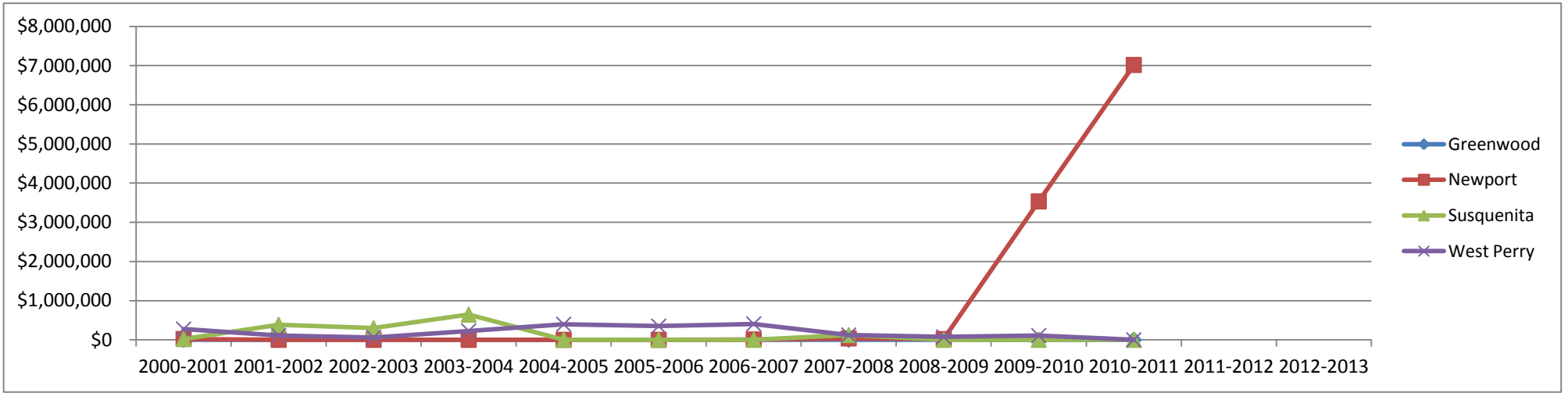
Federal Revenues Percent of Total Revenues

	2000-2001	2001-2002	2002-2003	2003-2004	2004-2005	2005-2006	2006-2007	2007-2008	2008-2009	2009-2010	2010-2011	2011-2012	2012-2013
Greenwood	3.50%	3.40%	3.30%	3.70%	3.70%	3.72%	2.03%	1.70%	1.41%	5.49%	7.13%		
Newport	3.20%	4.20%	4.60%	5.10%	4.70%	4.88%	2.00%	2.03%	2.13%	5.32%	6.46%		
Susquenita	0.80%	0.90%	1.30%	1.50%	1.50%	1.31%	1.32%	1.54%	1.27%	5.15%	6.63%		
West Perry	1.80%	1.80%	2.90%	2.40%	2.30%	2.14%	2.10%	1.94%	1.84%	5.53%	6.82%		



9000 Total Other Revenues

	2000-2001	2001-2002	2002-2003	2003-2004	2004-2005	2005-2006	2006-2007	2007-2008	2008-2009	2009-2010	2010-2011	2011-2012	2012-2013
Greenwood	\$0	\$0	\$7.00	\$455.00	\$0	\$0	\$0	\$1,096.00	\$576.16	\$0	\$50.00		
Newport	\$22,206	\$0	\$0	\$0	\$0	\$0	\$10,001.00	\$35,639.02	\$19,596.00	\$3,533,299.26	\$7,015,367.01		
Susquenita	\$22,519	\$383,700.00	\$300,000.00	\$643,000.00	\$0	\$0	\$0	\$122,196.85	\$0	\$0	\$0		
West Perry	\$273,941	\$110,397.48	\$61,933.10	\$227,559.17	\$396,855.79	\$349,449.94	\$406,397.92	\$124,641.85	\$74,913.55	\$108,125.20	\$4.86		



Other Revenues Percent of Total Revenues

	2000-2001	2001-2002	2002-2003	2003-2004	2004-2005	2005-2006	2006-2007	2007-2008	2008-2009	2009-2010	2010-2011	2011-2012	2012-2013
Greenwood	0.00%	0.00%	0.00%	0.00%	0.00%	0.00%	0.00%	0.00%	0.01%	0.13%	0.00%	0.00%	
Newport	0.20%	0.00%	0.00%	0.00%	0.00%	0.00%	0.00%	0.07%	0.24%	0.13%	18.47%	31.02%	
Susquenita	0.10%	1.80%	1.50%	2.80%	0.00%	0.00%	0.00%	0.00%	0.42%	0.00%	0.00%	0.00%	
West Perry	1.20%	0.50%	0.20%	0.90%	1.40%	1.14%	1.26%	0.37%	0.22%	0.31%	0.00%	0.00%	

